

Ca' Solare

Own the Sunset

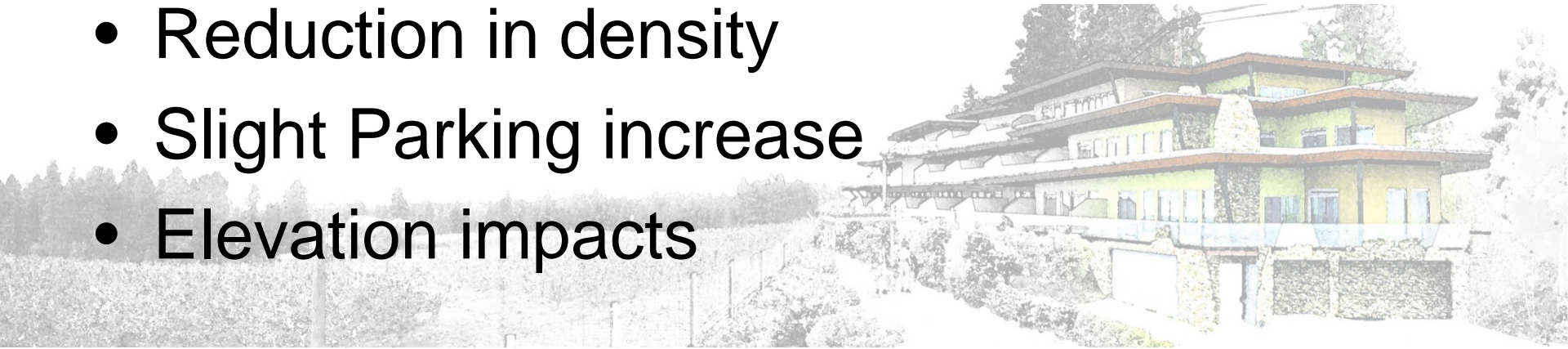


G Group
Construction and Development

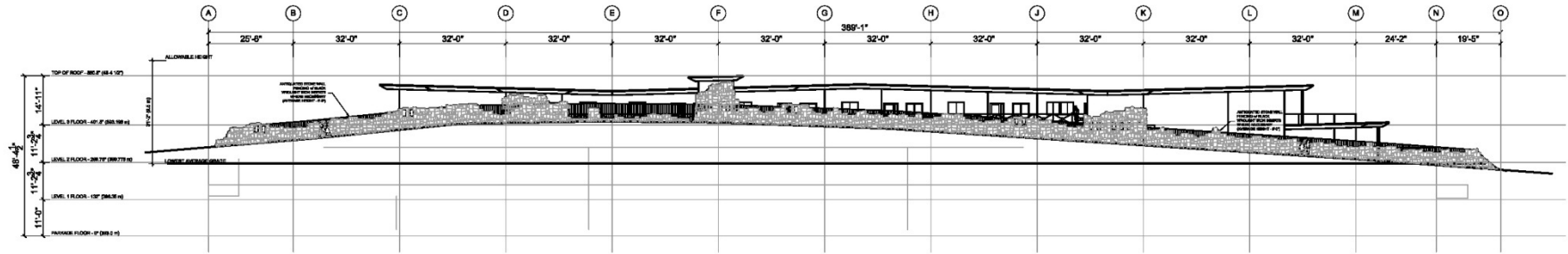
Minor Amendments
DP# 06-0141 October 27, 2008

Minor Amendments

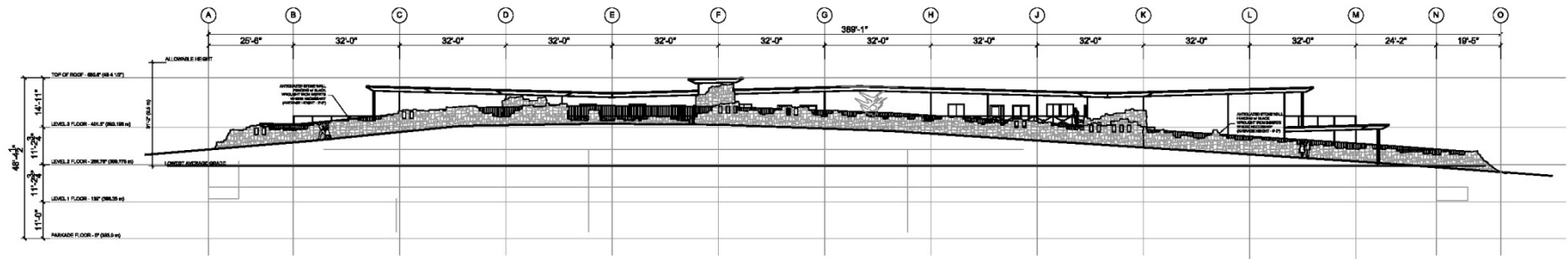
- Pool relocated
- Net increase of 1 home
- Reduction in density
- Slight Parking increase
- Elevation impacts



Elevations – East

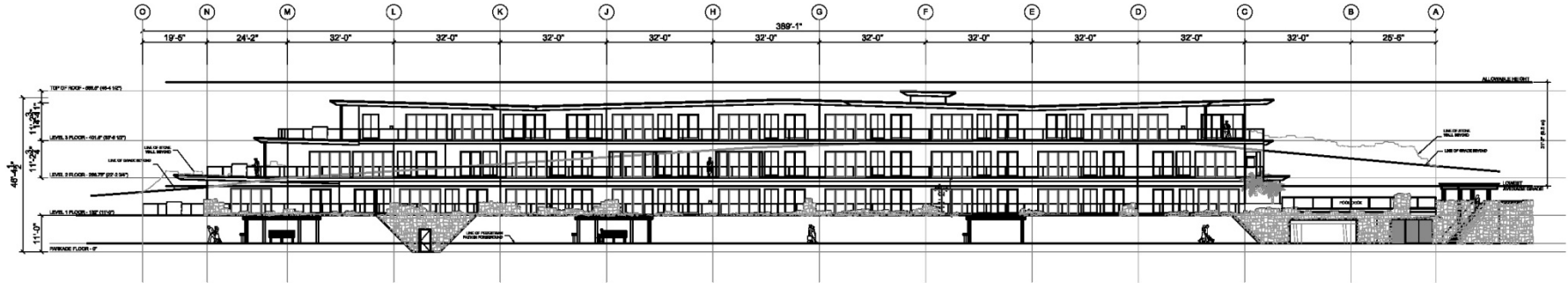


2 EAST ELEVATION - NEW
SCALE: 1/16" = 1'-0"

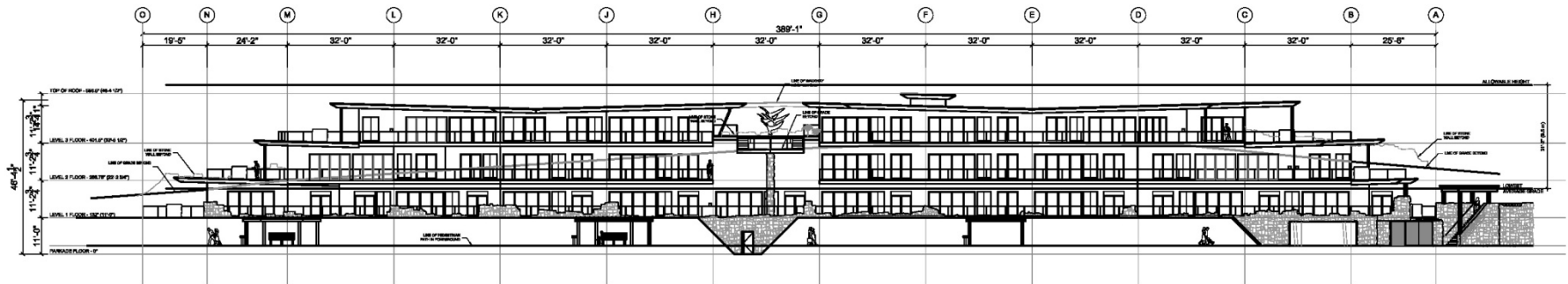


2 EAST ELEVATION - OLD
SCALE: 1/16" = 1'-0"

Elevations – West

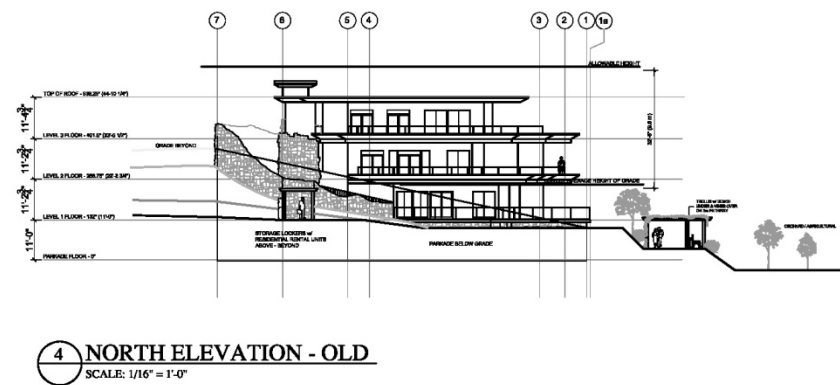
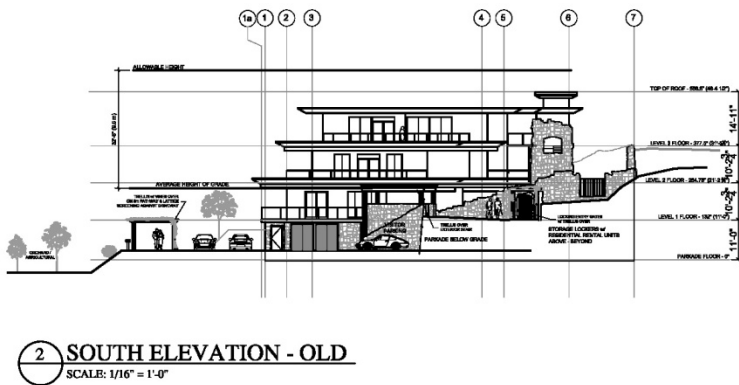
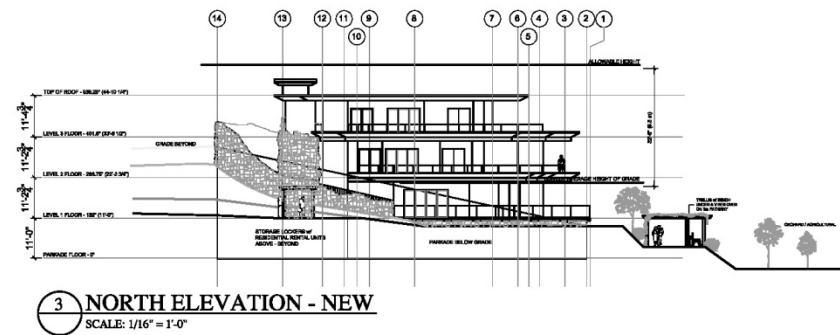
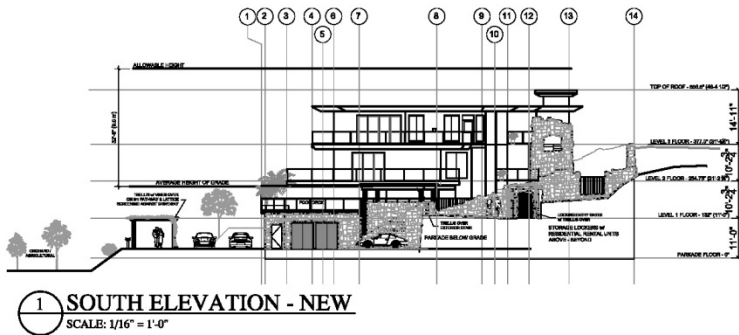


1 WEST ELEVATION - NEW
SCALE: 1/16" = 1'-0"



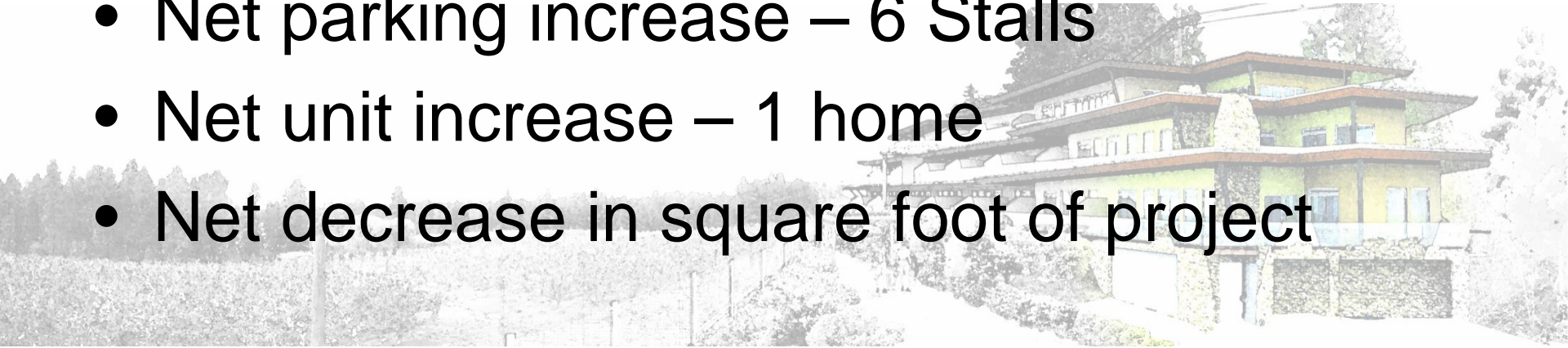
2 WEST ELEVATION - OLD
SCALE: 1/16" = 1'-0"

Elevations – North and South



Conclusion

- Minor variation to West, Lakefront, Elevation
- Net parking increase – 6 Stalls
- Net unit increase – 1 home
- Net decrease in square foot of project



Landscape Buffer – Boat Storage

